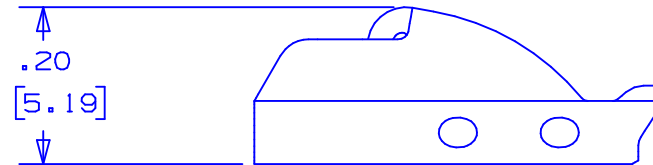
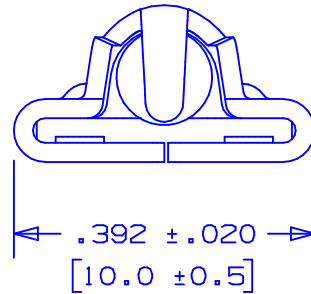
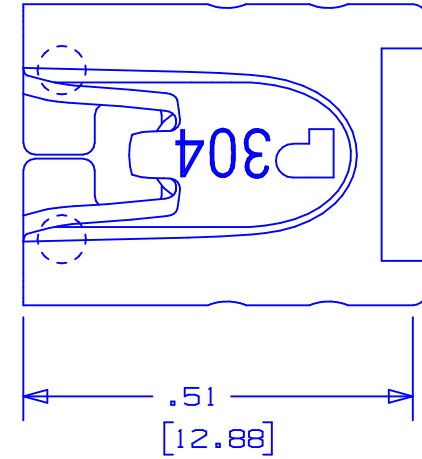



NOTES:

1. TO BE USED WITH PANDUIT METAL BANDING MBH-MR & MBH-TLR.
2. APPLICATION TOOL: GS4MT, ST2MT, PPTMT, ST3MT,<sup>(A)</sup> OR HTMT.
3. TOOL TENSION SETTING: 4 TO 8 (GS4MT AND PPTMT ONLY)
4. DIMENSIONS IN [ ] ARE MILLIMETERS.
- <sup>(B)</sup> 5. MINIMUM LOOP TENSILE STRENGTH: 250 LBS (1112 N)
6. TOLERANCES: .X = ±.030[ .762 ]  
 .XX = ±.020[ .508 ]  
 .XXX = ±.010[ .254 ]  
 ANGLES = ±2°



S41130\_01

01	10/03	BRH	DPN	(A) ADDED ST3MT TO APPLICATION TOOL NOTE.	11162	CCH	JJB	 PANDUIT CORP. TINLEY PARK, ILLINOIS METAL TIE HEAD HEAVY PART# MTHH-C 304 STAINLESS STEEL			
				(B) ADDED TENSILE STRENGTH NOTE.							
00	11/02	JAMB	DPN	RELEASED	10401	CCH	JJB				
REV	DATE	BY	CHK	DESCRIPTION	ECN #	PM	CUST	DRAWN BY JAMB	CHK'D DPN	SCALE 4x	DRAWING NO. S41130